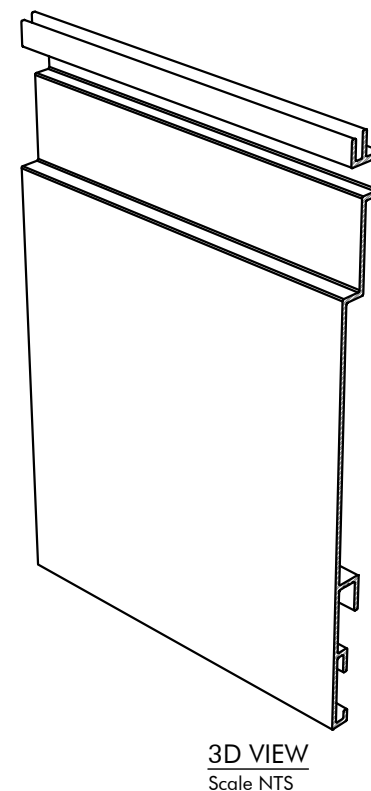


#PL1 TECHNICAL INFORMATION	
Part Description	Lignumplank 6-in. Board
Weight (lbs per foot)	0.8779
Finish	Woodgrain / Solid Color
Thickness	0.075-in
Square Ft./Board	10.5
Sizes Available	20-feet
Installation Type	Butt Joint / Shiplap
Coverage	Butt Joint: 5-1/2-in. Shiplap: 6-3/8-in.

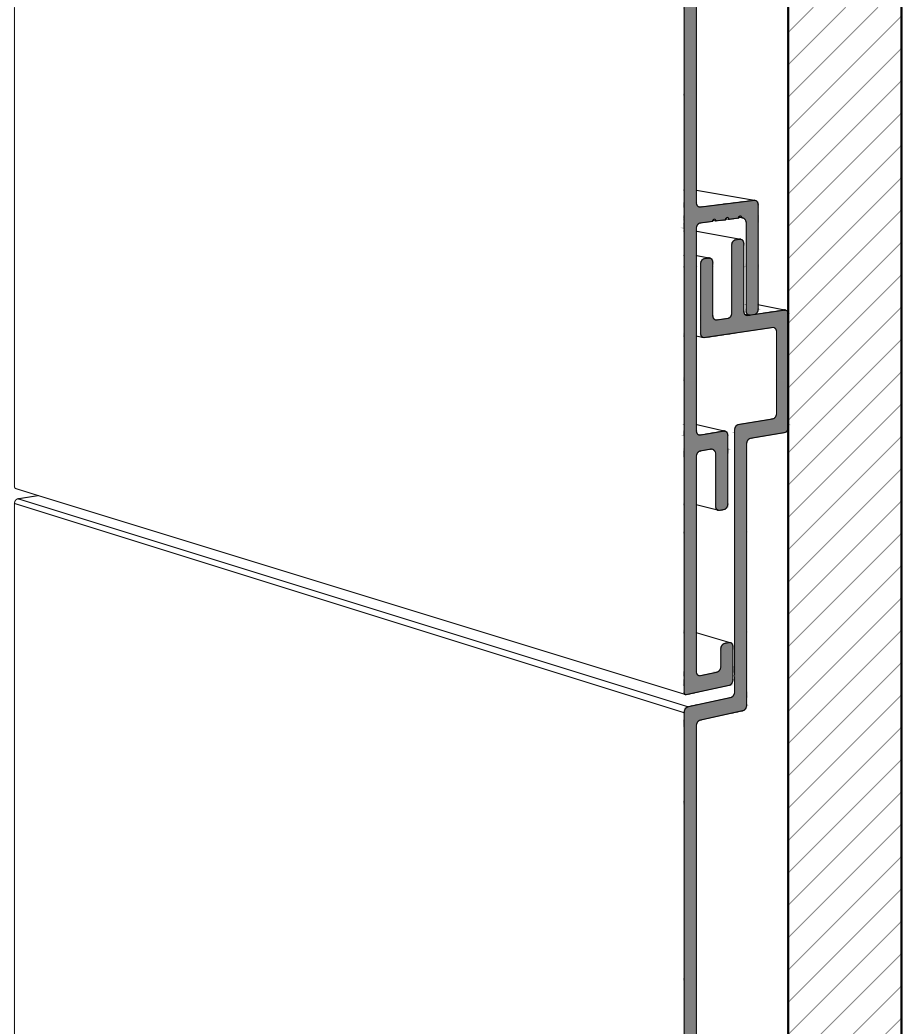
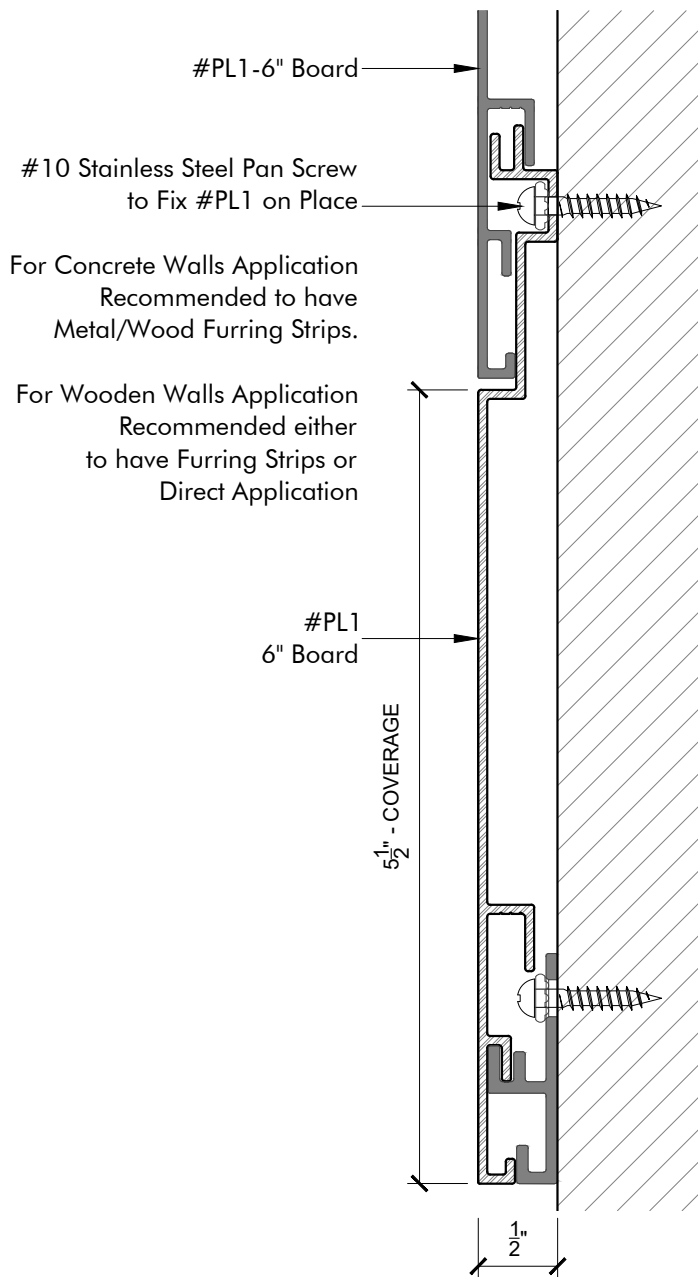


DISCLAIMER
THIS DRAWING IS A PROPERTY OF
LIGNUMPLANK.
ALL INFORMATION IS CONFIDENTIAL
AND MAY NOT BE REPRODUCED
WITHOUT THE CONSENT OF
LIGNUMPLANK.

Drawing Description:
LignumPlank Infinity
#PL1 - 6-inches LignumPlank Board

Date Drawn: 02/10/25
Drawing Scale: As Shown
Drawn by: VJT
Approved by: ML

Drawing Number:
PL1



BUTT JOIN INSTALLATION
Scale 9" = 1'-0"



DISCLAIMER
THIS DRAWING IS A PROPERTY OF
LIGNUMPLANK.
ALL INFORMATION IS CONFIDENTIAL
AND MAY NOT BE REPRODUCED
WITHOUT THE CONSENT OF
LIGNUMPLANK.

Drawing Description:
LignumPlank Infinity
#PL1 - 6-inches LignumPlank Board

Date Drawn: 02/10/25

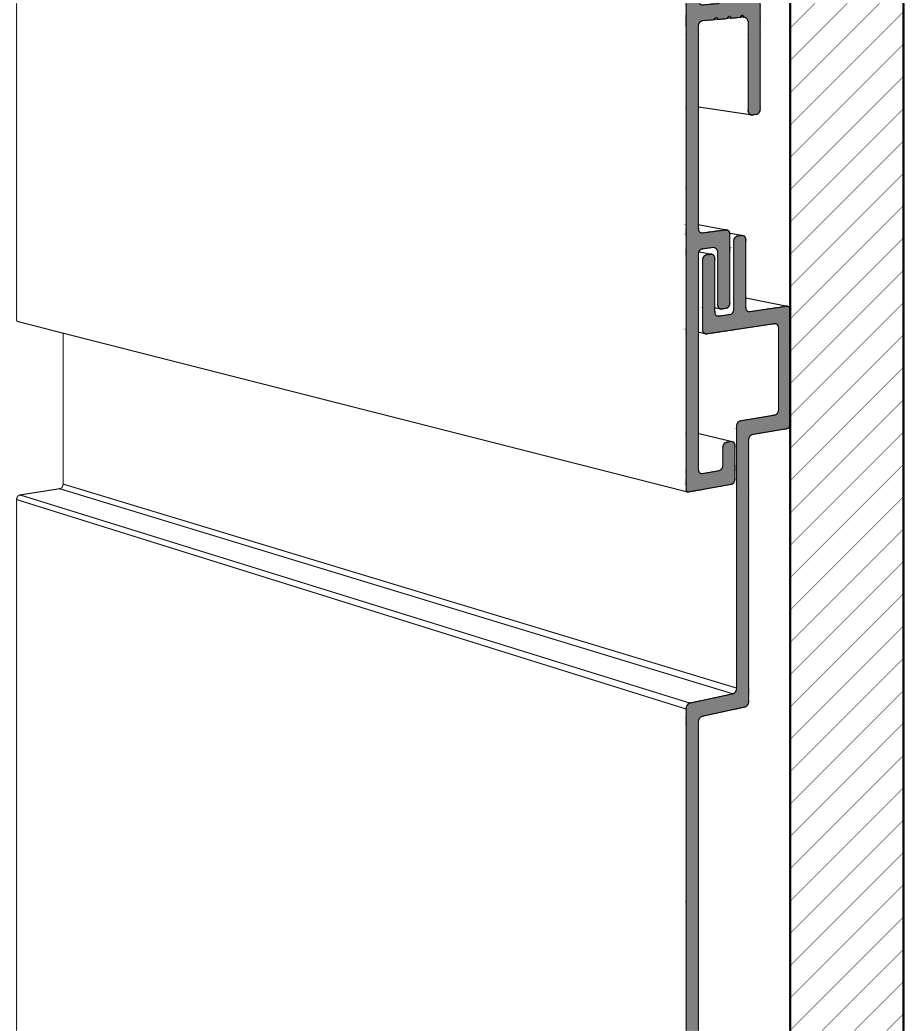
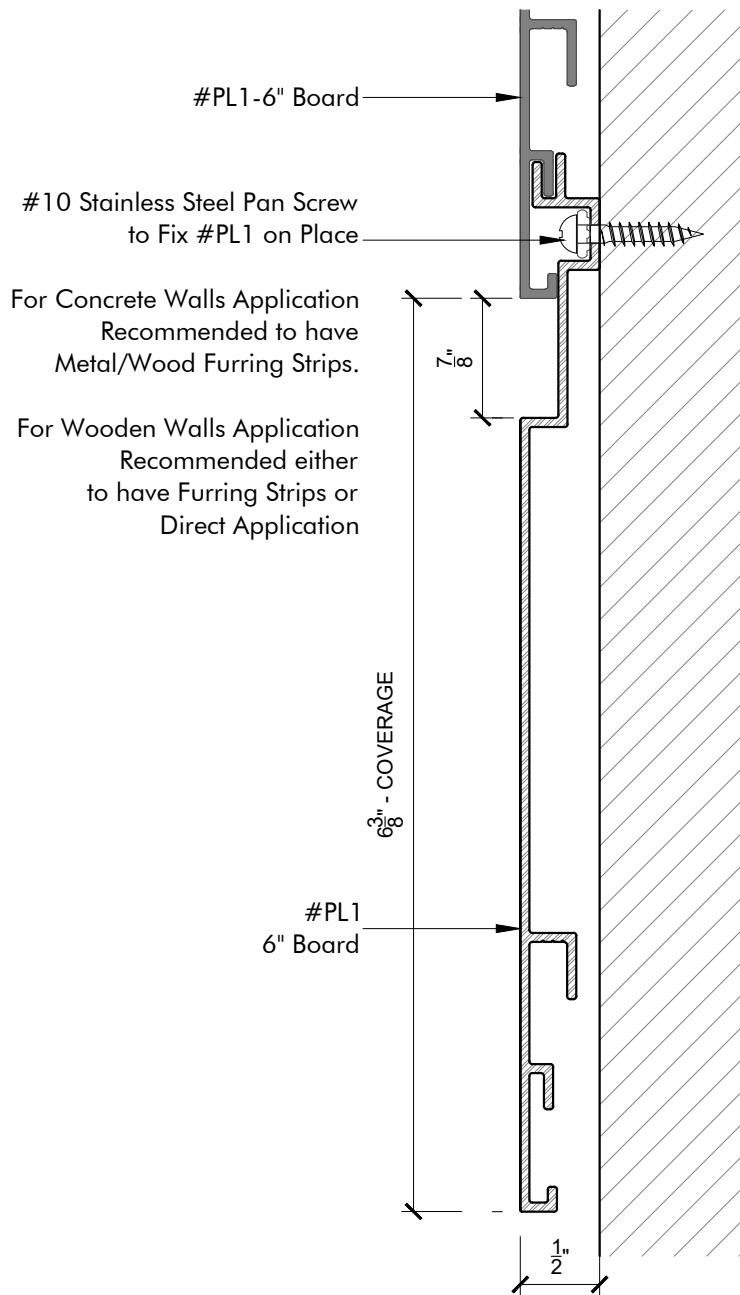
Drawing Scale: As Shown

Drawn by: VJT

Approved by: ML

Drawing Number:

PL1.IA



SHIPLAP INSTALLATION

Scale 9"= 1'-0"



DISCLAIMER
THIS DRAWING IS A PROPERTY OF
LIGNUMPLANK.
ALL INFORMATION IS CONFIDENTIAL
AND MAY NOT BE REPRODUCED
WITHOUT THE CONSENT OF
LIGNUMPLANK.

Drawing Description:

LignumPlank Infinity

#PL1 - 6-inches LignumPlank Board

Date Drawn: 02/10/25

Drawing Scale: As Shown

Drawn by: VJT

Approved by: ML

Drawing Number:

PL1.IB